

# Temperature Logger measuring instrument Type MI-LOG60

External Sensor



- Plug & Play temperature datalogger with USB 2.0 connector and Bluetooth 4.2
- Software & driver are not required for any operation.
- Automatically generate PDF and Excel report while plugged into computer.
- High accuracy, external sensor.
- Completely programmable by users for maximum flexibility.
- Includes: sampling interval, start delay, alarm.
- Protection grade IP65.
- Big LCD provides excellent viewing experience.
- Count key to review max. & min value of logged data.
- Large memory capacity, 32000 readings.
- Powered by 1 pc Lithium Battery ER14250 (Replaceable).
- PDF file contains summary, graph and detailed data list.
- FDA 21 CFR Part 11, CE, EN12830, RoHS, NIST.



BLE 4.0



USB



FDA



PDF



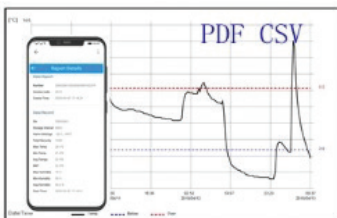
EXCEL



EN 12830



IP65



-100~+120°C temperature range

No bothering computer setting!!

Driver, Software and reader are all not required!!

Plug and Play!!



Model	MI-LOG60
Exp.temp range	NTC, -60... 120°C
Temp. resolution	0.1°C , 0.1°F
Temp. Accuracy	+/-0.5°C
Sampling points	32000 reading
Meter size	115(l) 50(W) 20(T)mm
Operating temp.	-30~70°C (Logging status); room temp.(PC mode)
Operating RH%	Humidity < 90%
Storage temp.	-40~70°C
Storage RH%	Humidity < 90%
Weight	120g
Battery	1pc lithium ER14250
Sampling interval	10sec.....18 house - Programmable
Alarm range	-60 - 120°C Programmable
Operation keys	2 Keys (Start/Stop key & Mark key & Count key)
Standard package	Logger, external sensor, battery



**Michshur s.z. (1984) LTD.**

8 Hagavish st., P.O.B. 1951 Holon 5881614, Israel  
Tel. 972-3-6508585 Fax. 972-3-6508586  
Email: info@michshur.com www.michshur.com